














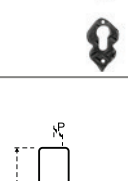
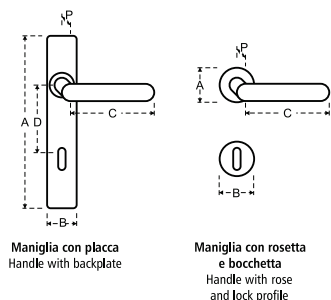


Descrizione Description	Articolo Product code	Finiture Finishes				Misure (mm) Measures (mm)						Packaging			Note
		IS	IH	IR		A	B	C	D	P	Ø	U.M.	Pack	Kg	
Serie / Series MARMOLADA Maniglia con placca mod. 201 Handle with backplate mod. 201															
 normale/normal	FMA 00201 N1	•	•	•		233	47	115	90	80		pair	2	2,2	
 cilindro/cylinder	FMA 00201 Y1	•	•	•		233	47	115	85	80		pair	2	2,1	
 normale <u>con molla</u> / normal <u>with spring</u>	FMA 0M201 N1	•	•	•		233	47	115	90	84		pair	2	2,2	
 cilindrico <u>con molla</u> / cylinder <u>with spring</u>	FMA 0M201 Y1	•	•	•		233	47	115	90	84		pair	2	2,2	
Serie / Series MARMOLADA Maniglia con placca mod. 82 Handle with backplate mod. 82															
 normale/normal	FMA 00082 N1	•	•	•		233	47	130	90	78		pair	2	2,1	
 cilindro/cylinder	FMA 00082 Y1	•	•	•		233	47	130	85	78		pair	2	2,0	
 normale <u>con molla</u> / normal <u>with spring</u>	FMA 00M82 N1	•	•	•		233	47	130	90	82		pair	2	2,1	
 cilindrico <u>con molla</u> / cylinder <u>with spring</u>	FMA 00M82 Y1	•	•	•		233	47	130	90	82		pair	2	2,1	
Serie / Series MARMOLADA Maniglia con rosetta e bocchetta mod. 201 Handle with rose and lock escutcheon mod. 201															
 normale/normal	FMA 00201 RN	•	•	•		120	47	115		80		pair	2	2,0	
 cilindro/cylinder	FMA 00201 RY	•	•	•		120	47	115		80		pair	2	1,9	
 normale <u>con molla</u> / normal <u>with spring</u>	FMA 0M201 RN	•	•	•		120	47	115		84		pair	2	2,0	
 cilindrico <u>con molla</u> / cylinder <u>with spring</u>	FMA 0M201 RY	•	•	•		120	47	115		84		pair	2	2,0	
Serie / Series MARMOLADA Maniglia con rosetta e bocchetta mod. 82 Handle with rose and lock escutcheon mod. 82															
 normale/normal	FMA 00082 RN	•	•	•		120	47	130		78		pair	2	1,6	
 cilindro/cylinder	FMA 00082 RY	•	•	•		120	47	130		78		pair	2	1,5	
 normale <u>con molla</u> / normal <u>with spring</u>	FMA 00M82 RN	•	•	•		120	47	130		82		pair	2	1,6	
 cilindrico <u>con molla</u> / cylinder <u>with spring</u>	FMA 00M82 RY	•	•	•		120	47	130		82		pair	2	1,6	



La distanza "D" tra foro maniglia e foro serratura può essere realizzata nelle misure richieste dal cliente
 The distance "D" between the hole of handle grip and the hole of the key (D), may be realized in any measures on demand of the customer



Le maniglie vengono fornite con quadro 8x105 e viti per legno ø3,5x20TC per il fissaggio
 Handles are supplied with 8x105 spindle and chipboard fixing screws ø3,5x20 phillips round head



Accessori correlati alla serie di prodotto a pag.54-57
 Fittings related to the product line at page 54-57

MARMOLADA



DISPONIBILE
ANCHE CON MOLLA
DI RITORNO
AVAILABLE WITH
RETURN SPRING
INSIDE

Modello / Model
Maniglia con placca mod. 201
Handle with backplate mod. 201

Varianti / Variants
Foro normale / Normal hole
Foro cilindro / Cylinder hole



DISPONIBILE
ANCHE CON MOLLA
DI RITORNO
AVAILABLE WITH
RETURN SPRING
INSIDE

Modello / Model
Maniglia con placca mod. 82
Handle with backplate mod. 82

Varianti / Variants
Foro normale / Normal hole
Foro cilindro / Cylinder hole



DISPONIBILE
ANCHE CON MOLLA
DI RITORNO
AVAILABLE WITH
RETURN SPRING
INSIDE

Modello / Model
**Maniglia con rosetta e
bocchetta mod. 201**
Handle with rose and
lock escutcheon mod. 201

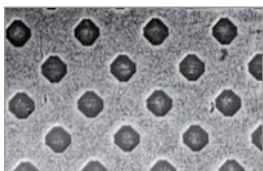
Varianti / Variants
Foro normale / Normal hole
Foro cilindro / Cylinder hole



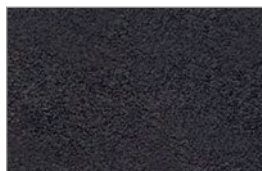
DISPONIBILE
ANCHE CON MOLLA
DI RITORNO
AVAILABLE WITH
RETURN SPRING
INSIDE

Modello / Model
**Maniglia con rosetta e
bocchetta mod. 82**
Handle with rose and
lock escutcheon mod. 82

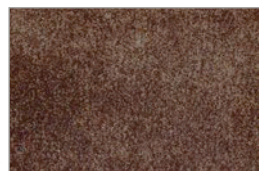
Varianti / Variants
Foro normale / Normal hole
Foro cilindro / Cylinder hole







IS
ferro con finitura silver
Iron with "silver" finish

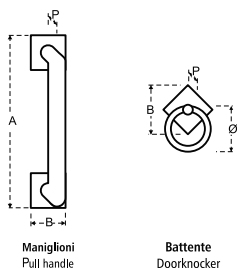


IH
ferro con verniciatura poliestere grafite
Iron with "graphite" finish



IR
ferro con finitura ruggine
Iron with rust finish

Descrizione Description	Articolo Product code	Finiture Finishes				Misure (mm) Measures (mm)						Packaging			Note		
		IS	IH	IR		A	B	C	D	P	Ø	U.M.	Pack	Kg			
Serie / Series MARMOLADA Maniglione fisso decentrato <i>Fixed offset pull handle</i>																	
 normale/normal	FMA 00222 R0	•	•	•		210	50			50		pcs	4	1,5			
maggiorato/increased	FMA 0222A RD	•	•	•		310	60			50		pcs	2	1,6			
Serie / Series MARMOLADA Maniglione fisso dritto <i>Fixed straight pull handle</i>																	
 normale/normal	FMA 0222D R0	•	•	•		210	50			63		pcs	4	1,5			
maggiorato/increased	FMA 222AD RD	•	•	•		310	60			63		pcs	2	1,6			
Serie / Series MARMOLADA Maniglione <i>Pull handle</i>																	
 FMA 00768 R0		•	•	•		290	60			110		pcs	4	4,6			
Serie / Series MARMOLADA Battente <i>Doorknocker</i>																	
 FMA 00286 00		•	•	•			107			25	105	pcs	6	2,3			



La distanza "D" tra foro maniglia e foro serratura può essere realizzata nelle misure richieste dal cliente
The distance between the hole of handle grip and the hole of the key (D), may be realized in any measures on demand of the customer



Le maniglie vengono fornite con quadro 8x105 e viti per legno ø3,5x20TC per il fissaggio
Handles are supplied with 8x105 spindle and chipboard fixing screws ø3,5x20 phillips round head



Accessori correlati alla serie di prodotto a pag.54-57
Fittings related to the product line at page 54-57

MARMOLADA



Modello / Model
Maniglione fisso decentrato
Fixed offset pull handle

Varianti / Variants
Normale / Normal
Maggiorato / Increased



Bocchetta per maniglione da acquistare separatamente
(vedi pagina 53)

Lock escutcheon for pull handle to buy separately
(see page 53)

Modello / Model
Maniglione fisso dritto
Fixed straight pull handle

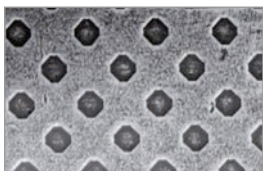
Varianti / Variants
Normale / Normal
Maggiorato / Increased



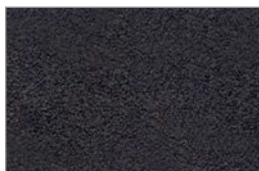
Modello / Model
Maniglione
Pull handle



Modello / Model
Battente
Doorknocker



IS
ferro con finitura silver
Iron with "silver" finish



IH
ferro con verniciatura poliestere grafite
Iron with "graphite" finish



IR
ferro con finitura ruggine
Iron with rust finish