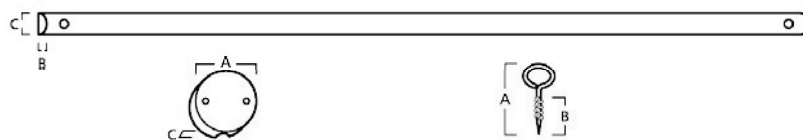
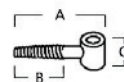
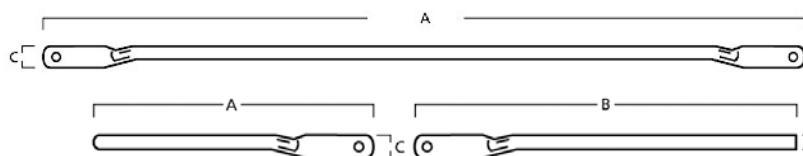


Descrizione Description	Articolo Product code	Finiture Finishes							Misure (mm) Measures (mm)						Packaging			Note
		IP	IT	IR	BB	XP	X6	X8	A	B	C	D	P	Ø	U.M.	Pack	Kg	
Serie / Series																		
24T																		
Asta esterna tonda																		
<i>External round rod</i>																		
∅ 9 x 1200 mm	FAS 0024T AP	•	•			•	•	•	1200		13				9	pcs	20	11
∅ 9 x 1600 mm	FAS 0024T A3	•	•			•	•	•	1600		13				9	pcs	20	14
∅ 9 x 2000 mm	FAS 0024T A4	•	•			•	•	•	2000		13				9	pcs	20	17
∅ 9 x 2400 mm	FAS 0024T AA	•	•			•	•	•	2400		13				9	pcs	10	10,5
∅ 9 x 2600 mm	FAS 0024T AB	•	•			•	•	•	2600		13				9	pcs	10	11,5
∅ 9 x 1250 mm	FAS 0024T A0				•	•	•	•	1250		13				9	pcs	10	6
∅ 9 x 1650 mm	FAS 0024T A5				•	•	•	•	1650		13				9	pcs	10	7,5
∅ 9 x 2100 mm	FAS 0024T A7				•	•	•	•	2100		13				9	pcs	10	9
∅ 9 x 2500 mm	FAS 0024T A6				•	•	•	•	2500		13				9	pcs	10	11,5
Asta esterna tonda pre-tagliata																		
<i>Cutted external round rod</i>																		
∅ 8 x (435+750) mm	FAS 0024T CD	•	•			•	•	•	435	750	13				8	pcs	10	10
∅ 8 x (435+1250) mm	FAS 0024T CE	•	•			•	•	•	435	1250	13				8	pcs	10	9,5
∅ 8 x (1030+1250) mm	FAS 0024T CF	•	•			•	•	•	1030	1250	13				8	pcs	10	10,5
∅ 8 x (1030+1500) mm	FAS 0024T CG	•	•			•	•	•	1030	1250	13				8	pcs	10	11
Serie / Series																		
24T																		
Passante per asta esterna tonda																		
<i>Through element for external round rod</i>																		
asta/rod ∅ 9	FCR 00133 00	•	•			•	•	•	35		12					pcs	100	0,9
asta/rod ∅ 8	FCR 00134 00	•	•			•	•	•	35		12					pcs	100	0,9
Serie / Series																		
24T																		
Incontro a vite																		
<i>Lock with screw</i>																		
	FCR 00794 00	•	•						52	30	16					pcs	40	0,9
Serie / Series																		
25T																		
Asta esterna 1/2 tonda																		
<i>External half round rod</i>																		
∅ 9 x 1200 mm	FAS 0025T 0P	•				•			1200	3,5	13					pcs	20	16
∅ 9 x 1600 mm	FAS 0025T 03	•				•			1600	3,5	13					pcs	20	17,8
Serie / Series																		
25T																		
Passante per asta esterna 1/2 tonda																		
<i>Through element for external half round rod</i>																		
	FCR 0137M 00	•				•			29		10					pcs	200	1,3
Serie / Series																		
25T																		
Incontro a vite per asta esterna 1/2 tonda																		
<i>Lock with screw for external half round rod</i>																		
	FCR 0794M 00	•				•			62	22						pcs	40	0,8



24T



Modello / Model
Asta esterna tonda
External round rod

Varianti / Variants

Ferro / Iron

- ø 9 x 1200 mm
- ø 9 x 1600 mm
- ø 9 x 2000 mm
- ø 9 x 2400 mm
- ø 9 x 2600 mm

Ottone / Brass

- ø 9 x 1250 mm
- ø 9 x 1650 mm
- ø 9 x 2100 mm
- ø 9 x 2500 mm

Modello / Model
Asta esterna tonda pre-tagliata
Cutted external round rod



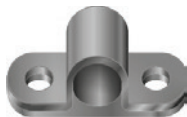
Varianti / Variants

Ferro / Iron

- ø 8 x (435+750) mm
- ø 8 x (435+1250) mm
- ø 8 x (1030+1250) mm
- ø 8 x (1030+1500) mm

Altezza massima finestra /
Maximum window height

- 1295 mm
- 1795 mm
- 2395 mm
- 2655 mm



Modello / Model
Passante per asta esterna tonda
Through element for external round rod



Modello / Model
Incontro a vite
Lock with screw



Scegliere il passante d8 o d9 a seconda del diametro dell'asta desiderata
Choose d8 or d9 through element, according to chosen rod diameter

Varianti / Variants

- asta/rod ø 8
- asta/rod ø 9

25T



Modello / Model
Asta esterna 1/2 tonda
External half round rod

Varianti / Variants

Ferro / Iron

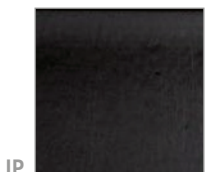
- 1200 mm
- 1600 mm



Modello / Model
Passante per asta esterna 1/2 tonda
Through element for external round rod



Modello / Model
Incontro a vite per asta esterna 1/2 tonda
Lock with screw for external half round rod



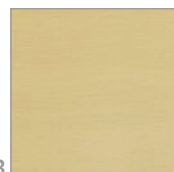
IP ferro con verniciatura poliestere nero
Iron with black powder coating



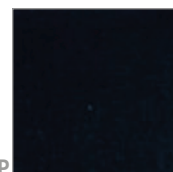
IT ferro tropicalizzato
Yellow zinc iron



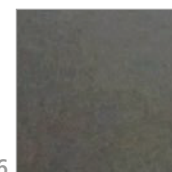
IR ferro con finitura ruggine
Iron with rust finish



BB ottone brunito
Burnished brass



XP inox AISI304 verniciato RAL9005
black painted stainless steel AISI 304

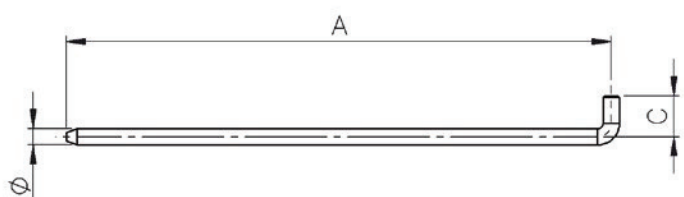


X6 inox AISI304 verniciato trasparente
transparent painted stainless steel AISI 304



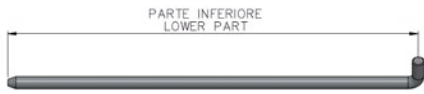
X8 inox AISI304 satinato e verniciato
painted stainless steel AISI 304

Descrizione Description	Articolo Product code	Finiture Finishes				Misure mm Measure mm						Packaging			Note	
		IW				A	B	C	D	P	Ø	U.M.	Pack	Kg		
Serie / Series 26T Asta interna tonda pre-tagliata Cutted internal round rod																
Ø 6 x (730+430) mm	FAS 0026T DA	●				730	430	15			6	pcs				
Ø 6 x (1480+1030) mm	FAS 0026T DD	●				1480	1030	15			6	pcs				
Ø 6 x (1180+430) mm	FAS 0026T DB	●				1180	430	15			6	pcs				
Ø 6 x (1180+1030) mm	FAS 0026T DC	●				1180	1030	15			6	pcs				



IW ferro con zincatura bianca
Iron with white zinc

26T



Modello / Model
**Asta interna tonda
pre-tagliata**

Cutted internal round rod

Varianti / Variants

Ferro / Iron

- ø 6 x (730+430) mm
- ø 6 x (1480+1030) mm
- ø 6 x (1180+430) mm
- ø 6 x (1180+1030) mm

Altezza massima finestra /
Maximum window height

- 1230 mm
- 2580 mm
- 1680 mm
- 2280 mm



CREMONESI
WINDOW HANDLES



- APPLICAZIONE DELL'ASTA INTERNA
- APPLICATION OF INTERNAL ROD

IW

