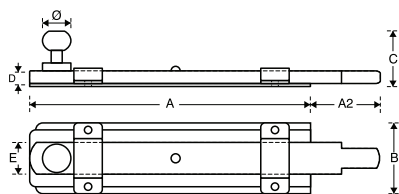


Descrizione Description	Articolo Product code	Finiture Finishes			Misure mm Measures mm								Packaging		Note				
		IN	IT	IF	A	A2	B	C	Ø	D	E	F	G	H		U.M. Pack	Kg		
<i>Serie / Series</i>																			
SMERALDA																			
<i>Modello / Model</i>	cm 20	FCS 00659 Z3	●	●		150	45	45	40	18	8	20					pcs	5	2,0
Catenaccio zancato finale tondo	cm 30	FCS 00659 Z5	●	●		250	45	45	40	18	8	20					pcs	5	3,0
<i>Flap cranked round end locking bolt</i>	cm 40	FCS 00659 Z7	●	●		340	50	45	40	18	8	20					pcs	5	3,9
	cm 50	FCS 00659 Z8	●	●		440	52	45	40	18	8	20					pcs	5	4,9
<hr/>																			
<i>Serie / Series</i>																			
BRAIT																			
<i>Modello / Model</i>	cm 20	FCS 00659 Z3			●	150	45	45	40	18	8	20					pcs	5	2,0
Catenaccio zancato finale tondo	cm 30	FCS 00659 Z5			●	250	45	45	40	18	8	20					pcs	5	3,0
<i>Flap cranked round end locking bolt</i>	cm 40	FCS 00659 Z7			●	340	50	45	40	18	8	20					pcs	5	3,9
	cm 50	FCS 00659 Z8			●	440	52	45	40	18	8	20					pcs	5	4,9
<hr/>																			
<i>Serie / Series</i>																			
SMERALDA																			
<i>Modello / Model</i>	cm 15	FCS 00659 H3	●	●		126	61	33	31	14	6	14					pcs	12	2,3
Catenaccio leggero zancato finale tondo	cm 25	FCS 00659 H4	●	●		198	77	33	31	14	6	14					pcs	8	2,2
<i>Light weight flap cranked round end locking bolt</i>	cm 40	FCS 00659 H7	●	●		339	71	33	31	14	6	14					pcs	8	3,4
<hr/>																			
<i>Serie / Series</i>																			
BRAIT																			
<i>Modello / Model</i>	cm 15	FCS 00659 H3			●	126	61	33	31	14	6	14					pcs	12	2,3
Catenaccio leggero zancato finale tondo																			
<i>Light weight flap cranked round end locking bolt</i>																			



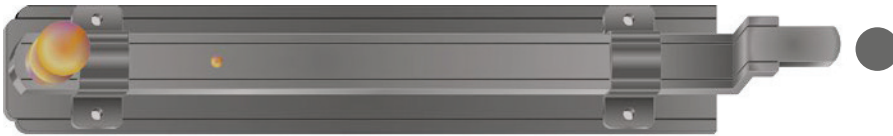
- IN** ferro fondo zincato e copertura polveri poliesteri nero RAL 9005
zinc treatment iron black powder coating
- IT** ferro tropicalizzato
yellow zinc iron
- IF** ferro fondo zincato e copertura polveri poliesteri finitura Brait
"Brait" finish iron

SMERALDA

Modello
**Catenaccio zancato
 finale tondo**

Model
*Flap cranked round end
 locking bolt*

Dimensioni /
 Dimensions available
 cm 20
 cm 30
 cm 40
 cm 50



BRAIT

Modello
**Catenaccio zancato
 finale tondo**

Model
*Flap cranked round end
 locking bolt*

Dimensioni /
 Dimensions available
 cm 20
 cm 30
 cm 40
 cm 50

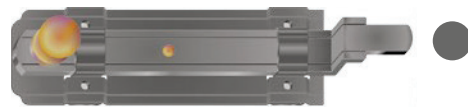


SMERALDA

Modello
**Catenaccio leggero
 zancato
 finale tondo**

Model
*Light weight
 flap cranked round end
 locking bolt*

Dimensioni /
 Dimensions available
 cm 15
 cm 25
 cm 40



BRAIT

Modello
**Catenaccio leggero
 zancato
 finale tondo**

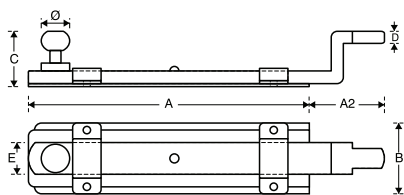
Model
*Light weight
 flap cranked round end
 locking bolt*

Dimensioni /
 Dimensions available
 cm 15



Per un'applicazione a regola d'arte, tutti i catenacci finale tondo vanno utilizzati con il relativo pozzetto antipolvere (vedi pag.134-135)
 For a well made application, all round end locking bolts must be applied with related antidust pit (see page 134-135)

Descrizione Description	Articolo Product code	Finiture Finishes				Misure mm Measures mm										Packaging			Note
		IN	IT	IF		A	A2	B	C	Ø	D	E	F	G	H	U.M.	Pack	Kg	
Serie / Series SMERALDA Modello / Model Catenaccio leggero zancato finale tondo Light weight flap cranked round end locking bolt																			
cm 15	FCS 00659 H3	●	●			126	61	33	31	14	6	14					pcs	12	2,3
cm 25	FCS 00659 H4	●	●			198	77	33	31	14	6	14					pcs	8	2,2
cm 40	FCS 00659 H7	●	●			339	71	33	31	14	6	14					pcs	8	3,4
Serie / Series BRAIT Modello / Model Catenaccio leggero zancato finale tondo Light weight flap cranked round end locking bolt																			
cm 15	FCS 00659 H3			●		126	61	33	31	14	6	14					pcs	12	2,3
Serie / Series SMERALDA Modello / Model Catenaccio zancato finale tondo Flap cranked round end locking bolt																			
cm 20	FCS 00659 Z3	●	●			150	45	45	40	18	8	20					pcs	5	2,0
cm 30	FCS 00659 Z5	●	●			250	45	45	40	18	8	20					pcs	5	3,0
cm 40	FCS 00659 Z7	●	●			340	50	45	40	18	8	20					pcs	5	3,9
cm 50	FCS 00659 Z8	●	●			440	52	45	40	18	8	20					pcs	5	4,9
Serie / Series BRAIT Modello / Model Catenaccio zancato finale tondo Flap cranked round end locking bolt																			
cm 20	FCS 00659 Z3			●		150	45	45	40	18	8	20					pcs	5	2,0
cm 30	FCS 00659 Z5			●		250	45	45	40	18	8	20					pcs	5	3,0
cm 40	FCS 00659 Z7			●		340	50	45	40	18	8	20					pcs	5	3,9
cm 50	FCS 00659 Z8			●		440	52	45	40	18	8	20					pcs	5	4,9



IN ferro fondo zincato e copertura polveri poliesteri nero RAL 9005
zinc treatment iron black powder coating

IT ferro tropicalizzato
yellow zinc iron

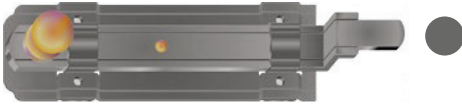
IF ferro fondo zincato e copertura polveri poliesteri finitura Brait
"Brait" finish iron

SMERALDA

Modello
**Catenaccio leggero
zancato
finale tondo**

Model
*Light weight
flap cranked round end
locking bolt*

Dimensioni /
Dimensions available
cm 15
cm 25
cm 40



BRAIT

Modello
**Catenaccio leggero
zancato
finale tondo**

Model
*Light weight
flap cranked round end
locking bolt*

Dimensioni /
Dimensions available
cm 15



SMERALDA

Modello
**Catenaccio zancato
finale tondo**

Model
*Flap cranked round end
locking bolt*

Dimensioni /
Dimensions available
cm 20
cm 30
cm 40
cm 50



BRAIT

Modello
**Catenaccio zancato
finale tondo**

Model
*Flap cranked round end
locking bolt*

Dimensioni /
Dimensions available
cm 20
cm 30
cm 40
cm 50



Per un'applicazione a regola d'arte, tutti i catenacci finale tondo vanno utilizzati con il relativo pozzetto antipolvere (vedi pag.134-135)
For a well made application, all round end locking bolts must be applied with related antidust pit (see page 134-135)