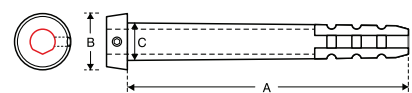
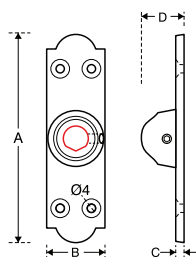
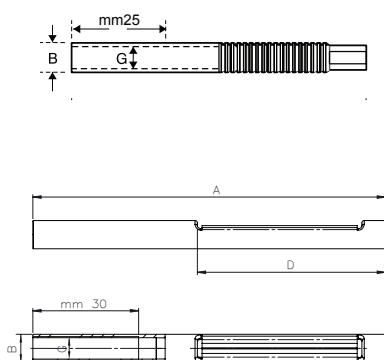


Descrizione Description	Articolo Product code	Finiture Finishes				Misure mm Measures mm										Packaging			Note	
		IN	IT	IW		A	A2	B	C	Ø	D	E	F	G	H	U.M.	Pack	Kg		
Modello / Model Tassello metallico per cardini gambo sagomato applicazione in facciata Metal plug for pivot with shaped leg frontage application	mm 135 - Ø 18 FCA 000TU 0T	●	●			135		28	18								pcs	30	4,2	
	mm 200 - Ø 18 FCA 000TU 3T	●	●			200		28	18								pcs	30	4,2	
Modello / Model Tassello metallico per cardini per applicazione in luce Metal plug for pivot for internal application	mm 80 - Ø 12 FCA 000TU 1T		●			80		12						10		pcs	100	3,6		
	mm 120 - Ø 12 FCA 000TU 2T		●			120		12						10		pcs	50	4,3		
Modello / Model Tassello metallico per cardini ad applicazione in facciata Metal plug for pivot for frontage application	mm 150 - Ø 16 FCA 100TU 1Z			●		150		16						12		pcs	50			
	mm 200 - Ø 16 FCA 100TU 2Z			●		200		16						12		pcs	50			
	mm 150 - Ø 12 FCA 000TU 1Z			●		150		12						10		pcs	50			
	mm 200 - Ø 12 FCA 000TU 2Z			●		200		12						10		pcs	50			
Modello / Model Piastrina di regolazione per cardini gambo sagomato Plate for adjusting for pivot with shaped and adjustable leg	mm 100 x 28 FCA 000TU 0P	●	●			100		28	4	18						pcs	30	4,2		



- IN** ferro fondo zincato e copertura polveri poliesteri nero RAL 9005
zinc treatment iron black powder coating
- IT** ferro tropicalizzato
yellow zinc iron
- IW** ferro zincato bianco
white zinc iron



Modello / Model

Tassello metallico per cardini con gambo sagomato applicazione in facciata

Metal plug for pivot with shaped leg frontage application

Dimensioni /

Dimensions available

mm 135 - Ø 18

mm 200 - Ø 18



IDONEO PER CARDINI A GAMBO SAGOMATO (PAG. 119)
SUITABLE FOR SHAPED LEG PIVOTS (PAGE)



PER LA SCELTA DEL PRODOTTO VEDI PAG. 321
FOR PRODUCT PICKING SEE PAGE 321



Modello / Model

Tassello metallico per cardini per applicazione in luce

Metal plug for pivot for internal application

Dimensioni /

Dimensions available

mm 80 - M10

mm 120 - M10



IDONEO PER CARDINI GAMBO A VITE M10
(PAG. 117 - 121 - 123 - 135)
*SUITABLE FOR PIVOTS WITH SCREW LEG M10
(PAGE 117 - 121 - 123 - 135)*



Modello / Model

Tassello metallico per cardini ad applicazione in facciata

Metal plug for pivot for frontage application

Dimensioni /

Dimensions available

mm 150 - M12

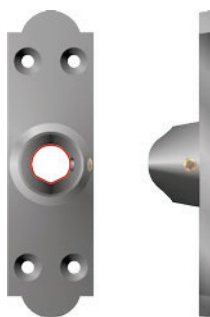
mm 200 - M12

mm 150 - M10

mm 200 - M10



IDONEO PER CARDINI GAMBO A VITE M12
(PAG. 117 - 123)
*SUITABLE FOR PIVOTS WITH SCREW LEG M12
(PAGE 117 - 123)*



Modello / Model

Piastrina di regolazione per cardini gambo sagomato

Plate for adjusting for pivot with shaped and adjustable leg

Dimensioni /

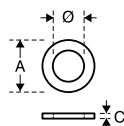
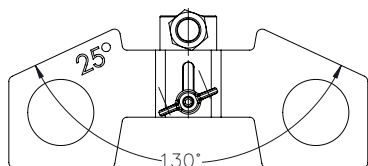
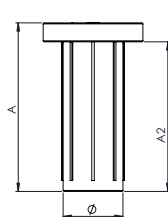
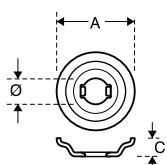
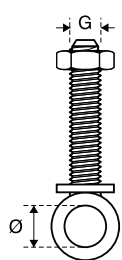
Dimensions available

mm 100 x 28



IDONEO PER CARDINI A GAMBO SAGOMATO (PAG. 135)
SUITABLE FOR SHAPED LEG PIVOTS (PAGE 135)

Descrizione Description	Articolo Product code	Finiture Finishes					Misure mm Measures mm								Packaging			Note		
		IW					A	A2	B	C	Ø	D	E	F	G	H	U.M.		Pack	Kg
Modello / Model Dima di foratura per cardini a muro Template for drilling for wall pivots	mm 10- Ø 16	FCA 0000D 10	●														pcs	10	0,6	
	mm 12- Ø 16	FCA 0000D 20	●														pcs	10	0,6	
Modello / Model Dima di foratura per cardini a muro ad inclinazione variabile Template for drilling variable inclinations for wall pivots		FCA 0000D 03	●														pcs	2	0,7	
Modello / Model Rosetta copriforo per cardini con gambo a muro Hole concealer washer for wall pivot	mm 30- Ø 10	FCA R0504 0J	●	●	●	●	●	30		7	10						pcs	200	0,2	
	mm 30 - Ø 12	FCA R0504 0K	●	●	●	●	●	30		7	12						pcs	200	0,2	
Modello / Model Boccola di riduzione per bandelle Reduction bushing for strap hinge		LVR 00000 52	●					34.5			12						pcs	200		
Modello / Model Boccola di riduzione con griffe Adaptor bush for strap hinge		LVR 00001 01	●					30	34		12						pcs	200		
Modello / Model Rondella di sostegno per cardini e bandelle Washer for supporting pivot and hinge	mm 16 - Ø 10	FRN P1016 15	●	●				16		1,5	10						pcs	50	0,1	
	mm 20 - Ø 12	FRN P1220 15	●	●				20		1,5	12						pcs	50	0,1	



IW ferro zincato bianco
zinc treatment iron

N1 nylon nero
black nylon

N2 nylon giallo
yellow nylon

N3 nylon bianco
white nylon

N4 nylon grigio
grey nylon

XZ inox zincato nero
black zinc stainless steel

XT inox tropicalizzato
yellow zinc stainless steel

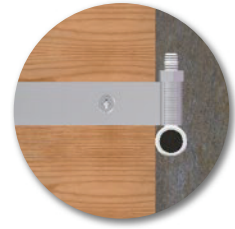
XT inox tropicalizzato
yellow zinc stainless steel

G1 EPDM 70 SH; tolleranza ISO 3302
classe E2; qualità secondo ISO
2859 AQL 1,5
EPDM 70 SH; ISO tolerance class
E2 3302; quality according to ISO
2859 AQL 1.5.



Modello / Model
Dima di montaggio per cardini con gambo a vite e tondo per montaggio con ancorante chimico
Template to assembly pivots with screw and marble leg

Dimensioni / Dimensions available
mm 10 Ø 16
mm 12 Ø 16



Modello / Model
Dima di foratura per cardini a muro ad inclinazione variabile
Template for drilling variable inclinations for wall pivots



SEGUIRE LE ISTRUZIONI INCLUSE NELLA CONFEZIONE O SCARICABILI DAL SITO www.didieffe.com
FOLLOW THE FITTING INSTRUCTIONS INCLUDED IN THE PACKAGE OR DOWNLOADABLE FROM www.didieffe.com



ESEMPIO APPLICATIVO Nr. 21 Pag. 313
EXAMPLE OF APPLICATION No. 21 Page 313



Modello / Model
Rosetta copriforo per cardini con gambo a muro
Hole concealer washer for wall pivot

Dimensioni / Dimensions available
mm 30 Ø 10
mm 30 Ø 12



Modello / Model
Boccola di riduzione
Reduction bushing for strap hinge

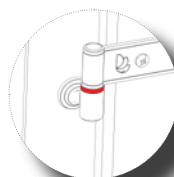


Modello / Model
Boccola di riduzione con griffe
Adaptor bush for strap hinge



Modello / Model
Rondella sostegno per cardini e bandelle
Washer for supporting pivot and hinge

Dimensioni / Dimensions available
mm 16 Ø 10
mm 20 Ø 12



ESEMPIO APPLICATIVO Nr. 20 Pag. 313
EXAMPLE OF APPLICATION No. 20 Page 313