

MATERIAL MATERIAL

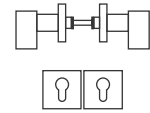
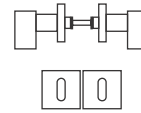
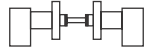
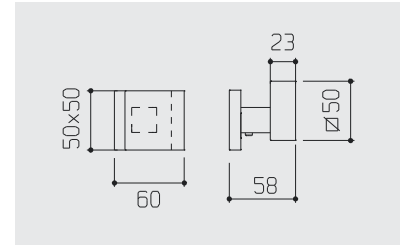
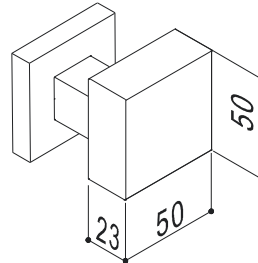
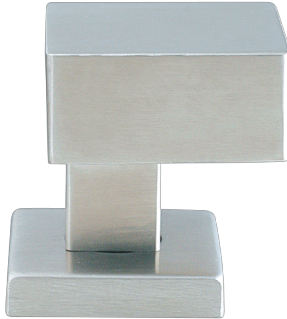
**INOX  
AISI 304**

FINITURA FINISH

**F60**

**INOX SATINATO SATIN S. STEEL**

POMOLO DECENTRATO  
OFFSET KNOB



**329KS 211B 60**

POMOLO SINGOLO FISSO  
CON ROSETTA QUADRA

*SINGLE FIXED KNOB  
WITH SQUARE ROSE*

**329KS 02 211B 60**

COPPIA POMOLI GIREVOLI  
CON ROSETTA QUADRA  
SENZA BOCCHETTE

*PAIR OF TURNABLE KNOBS  
WITH SQUARE ROSE  
WITHOUT ESCUTCHEON*

**329KS 02 211B B 60**

COPPIA POMOLI GIREVOLI  
CON ROSETTA QUADRA  
E BOCCHETTE FORO CHIAVE

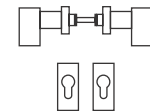
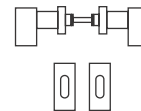
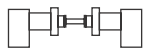
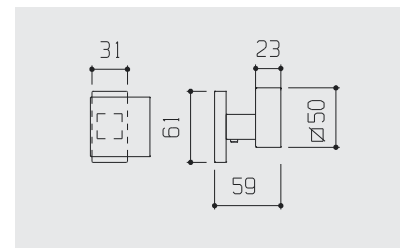
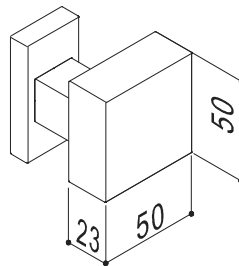
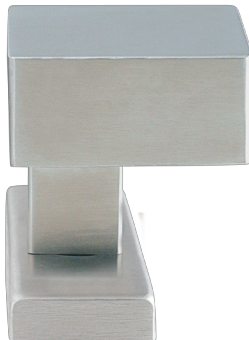
*PAIR OF TURNABLE KNOBS  
WITH SQUARE ROSE  
AND KEY HOLE ESCUTCHEON*

**329KS 02 211B Z 60**

COPPIA POMOLI GIREVOLI  
CON ROSETTA QUADRA  
E BOCCHETTE FORO CILINDRO

*PAIR OF TURNABLE KNOBS  
WITH SQUARE ROSE  
AND CYLINDER HOLE ESCUTCHEON*

POMOLO DECENTRATO  
OFFSET KNOB



**329KS 276 60**

POMOLO SINGOLO FISSO  
CON ROSETTA RETTANGOLARE

*SINGLE FIXED KNOB  
WITH RECTANGULAR ROSE*

**329KS 02 276 60**

COPPIA POMOLI GIREVOLI  
CON ROSETTA RETTANGOLARE  
SENZA BOCCHETTE

*PAIR OF TURNABLE KNOBS  
WITH RECTANGULAR ROSE  
WITHOUT ESCUTCHEON*

**329KS 02 276 B 60**

COPPIA POMOLI GIREVOLI  
CON ROSETTA RETTANGOLARE  
E BOCCHETTE FORO CHIAVE

*PAIR OF TURNABLE KNOBS  
WITH RECTANGULAR ROSE  
AND KEY HOLE ESCUTCHEON*

**329KS 02 276 Z 60**

COPPIA POMOLI GIREVOLI  
CON ROSETTA RETTANGOLARE  
E BOCCHETTE FORO CILINDRO

*PAIR OF TURNABLE KNOBS  
WITH RECTANGULAR ROSE  
AND CYLINDER HOLE ESCUTCHEON*