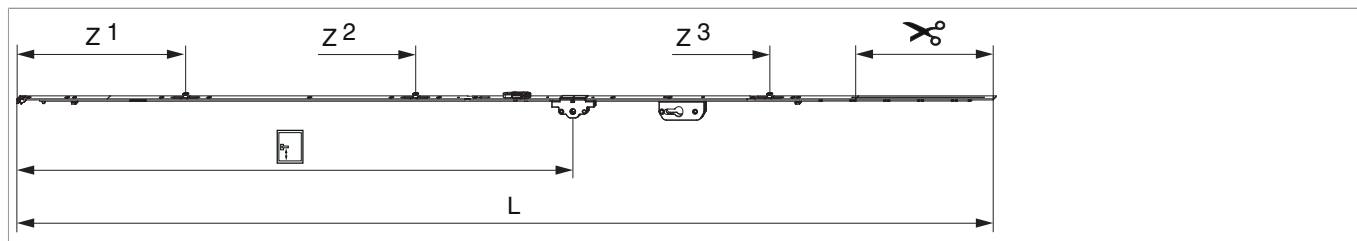




206985 - Cremonese Multi Matic 1950 E50 fix bloccabile con cilindro con 3 funghi HBB 1.701-1.950 HM1.050 argento

Disegni tecnici



							L		Nº
argento	1950	50	1.050	1.701 - 1.950	260,5	1	1.846,5	10	206985

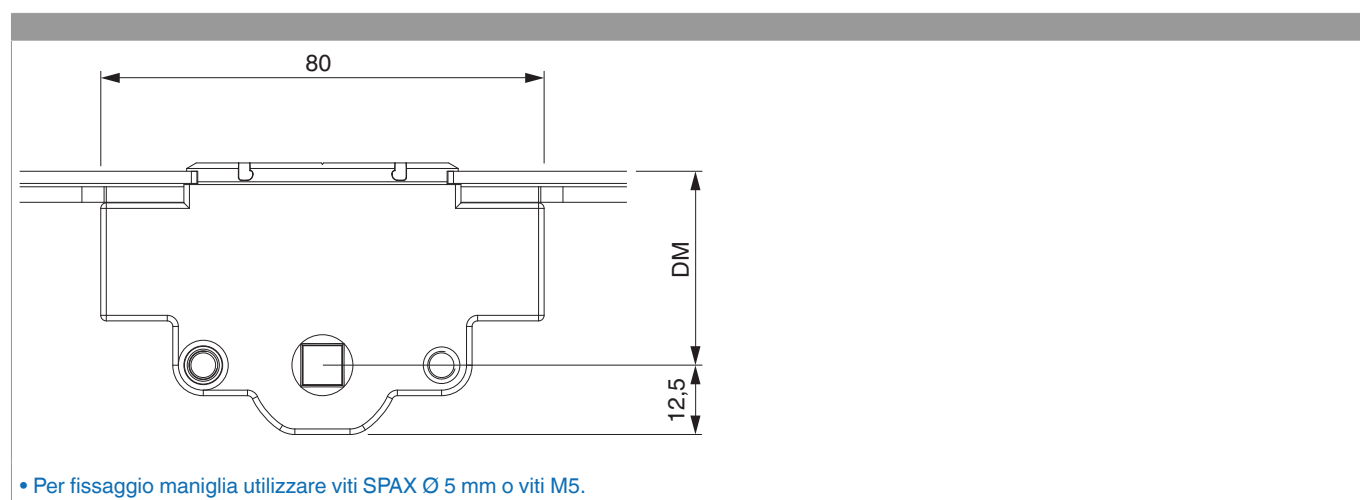
Tabella posizionamento viti

Nº		1	2	3	4	5	6	7	8	9	10	11	12	13	14
206985	11	18,5	91,5	270	360	550	705	795	863,5	1.124	1.388	1.465			

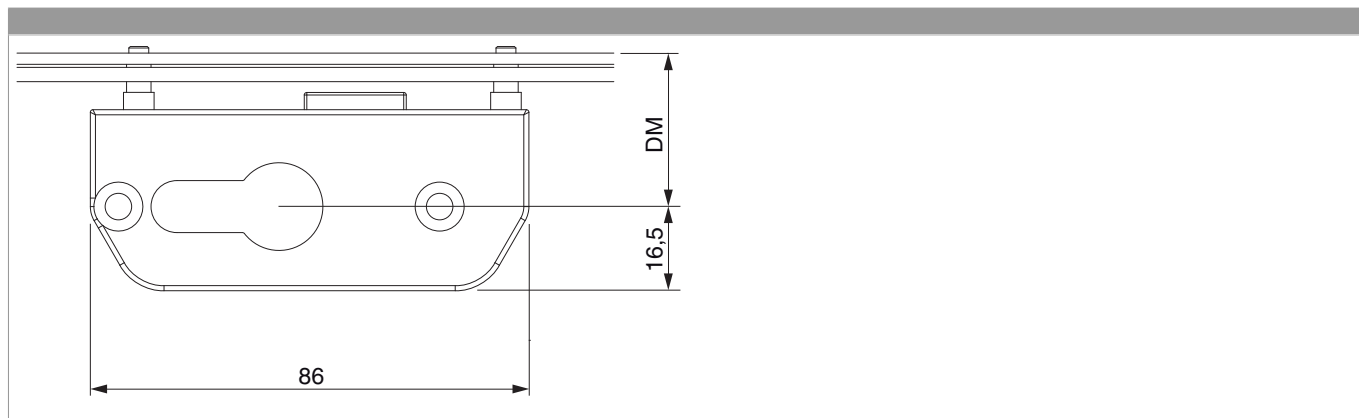
Tabella punti di chiusura

Nº		Z1	Z2	Z3	Z4
206985	3	315	750	1.420	

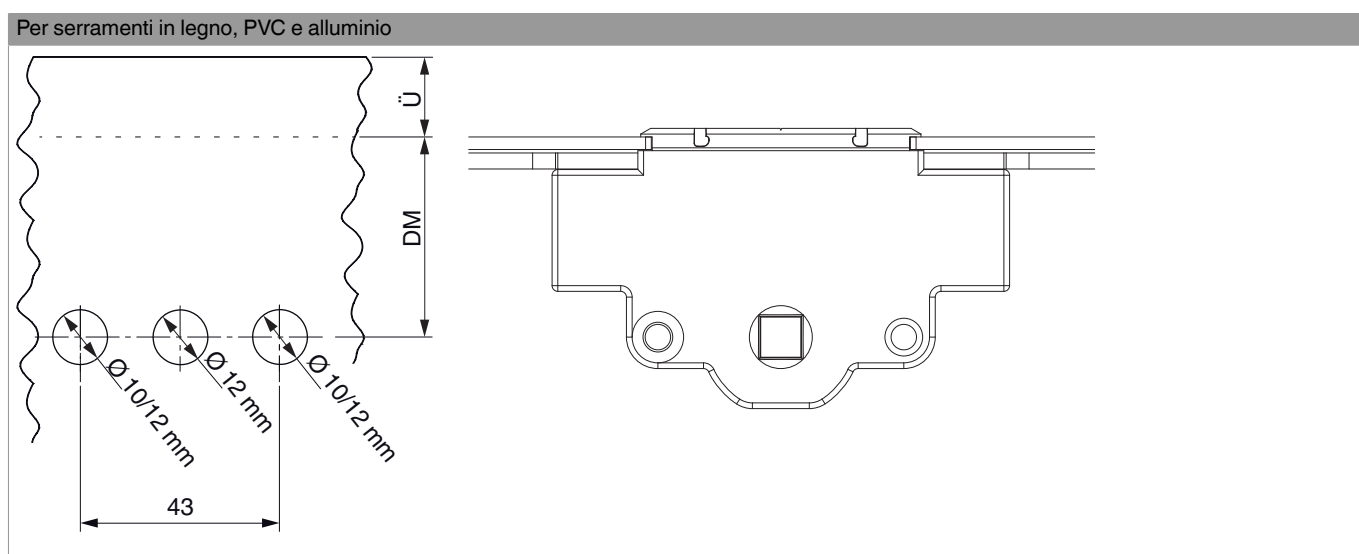
Quote della scatola cremonese



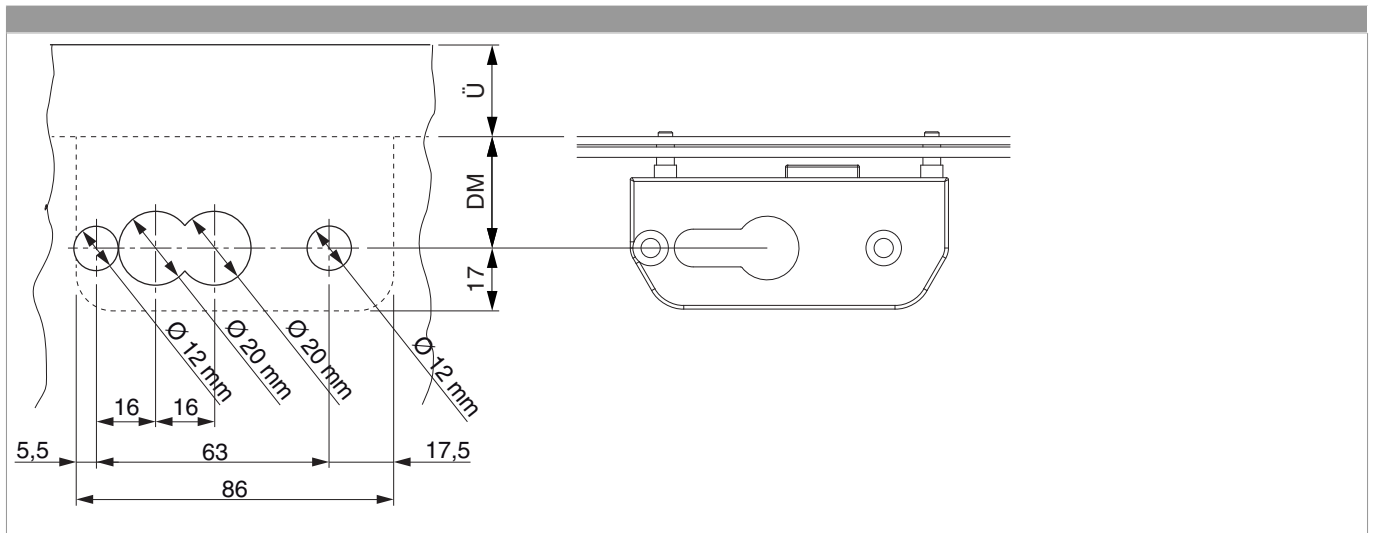
Quote scatola serratura



Schema di foratura

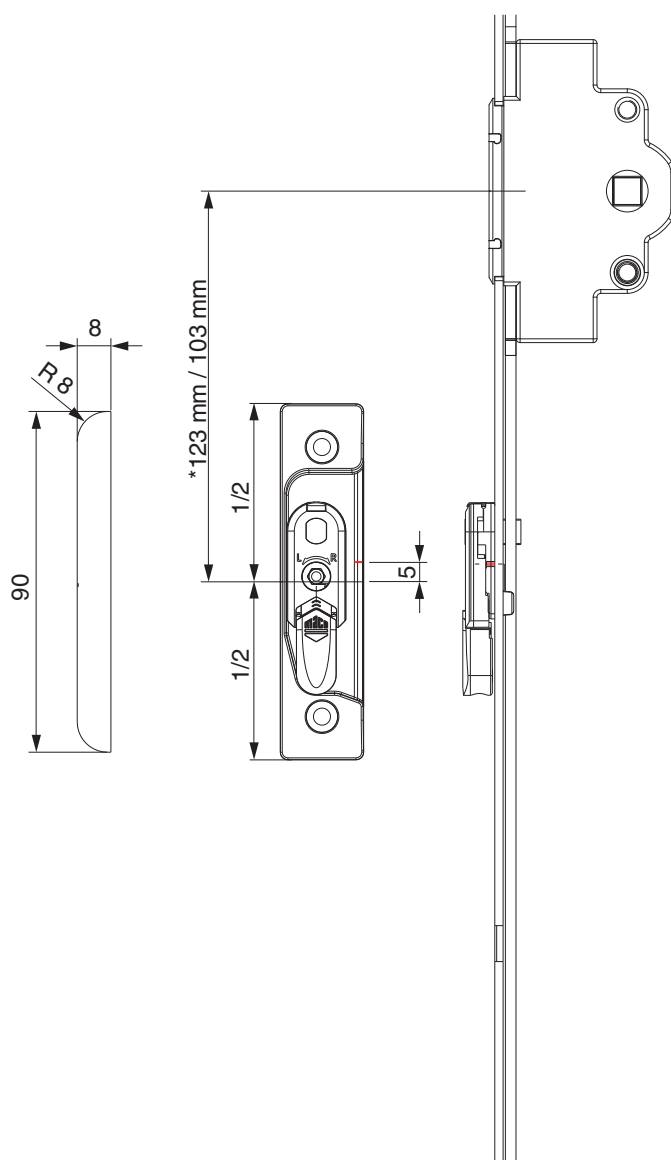


Schema foro per scatola serratura



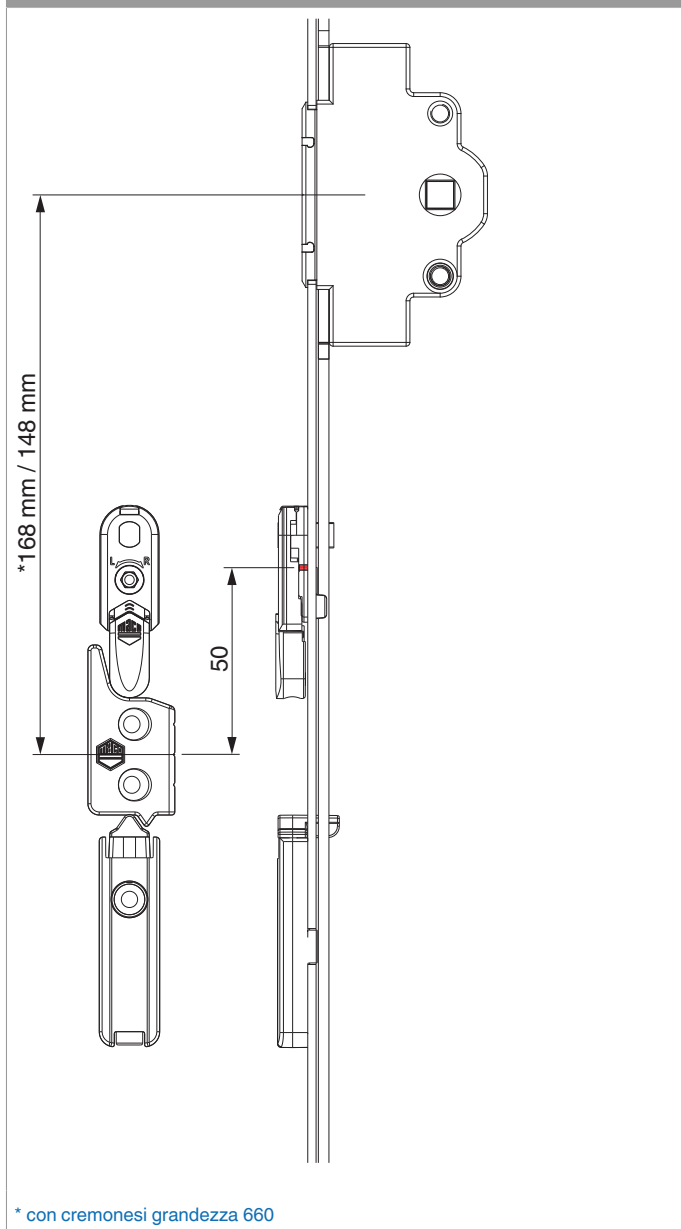
Posizionamento scontri alza anta

Scontro alza-anta A4 / senza scrocco porta

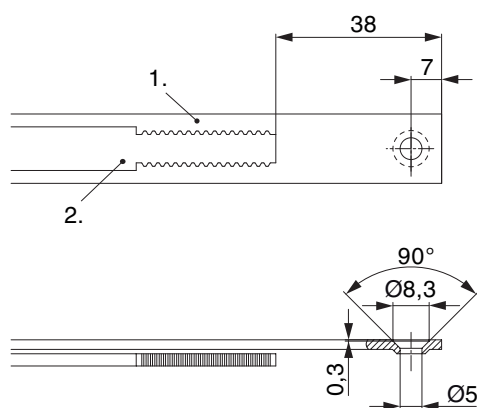


* con cremonesi grandezza 660

A12



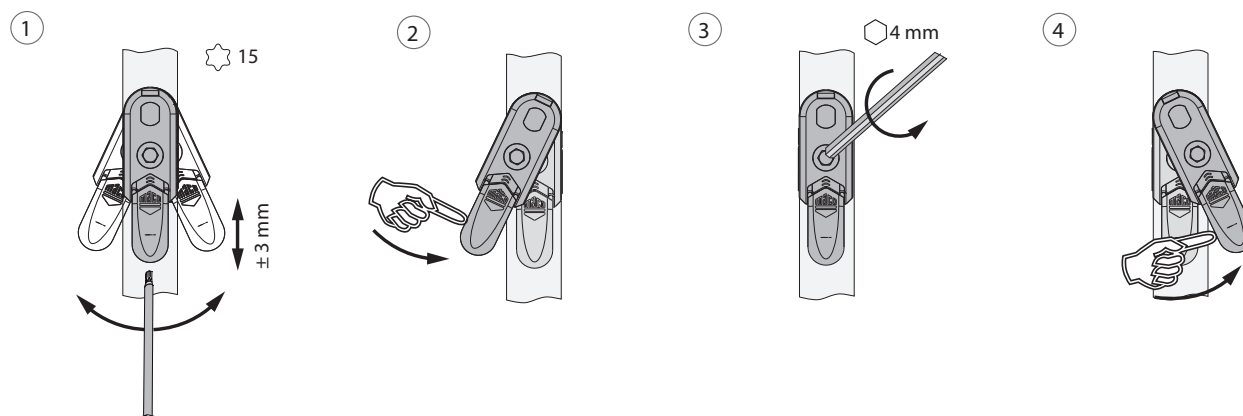
Schema di tranciatura



• Consigliamo di trattare il taglio dei componenti TRICOAT-PLUS con la vernice di ritocco TRICOAT-PLUS (cod. 358440).

- 1. Frontale
- 2. Asta mobile

Oscillazione e regolazione in altezza dell'alza anta

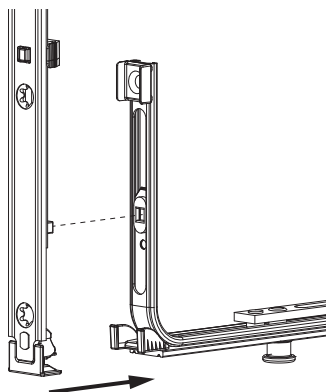


- 1. Oscillazione e regolazione in altezza dell'alza anta
- 2. Azzeramento dell'alza anta
- 3. Fissaggi centrali del dispositivo alza anta.
- 4. Orientare il dispositivo alza anta.

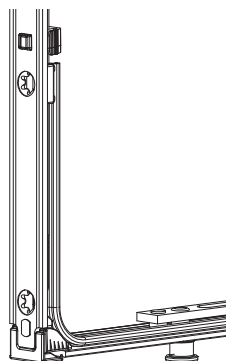
Collegamento a clips

Agganciare collegamenta a clips

①

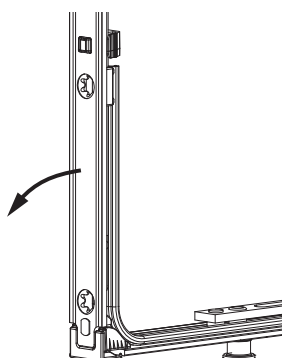


②

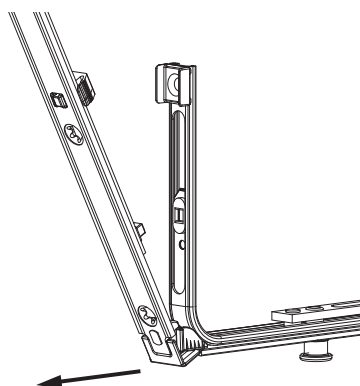


Sganciare collegamento clips

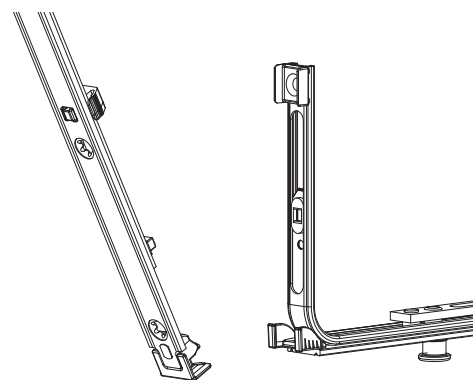
①



②

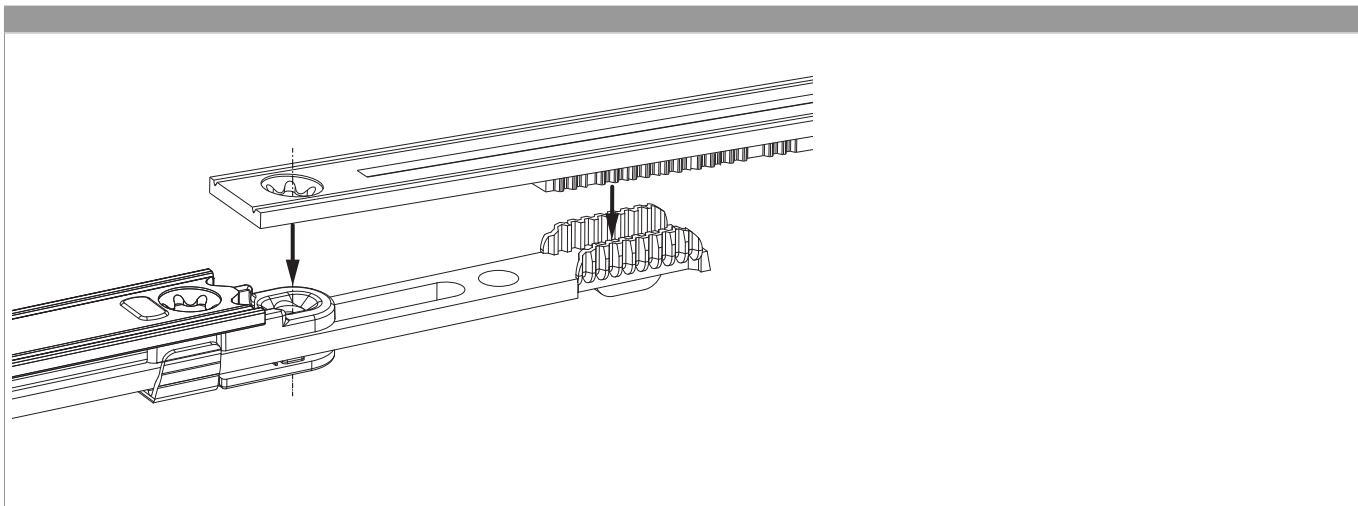


③

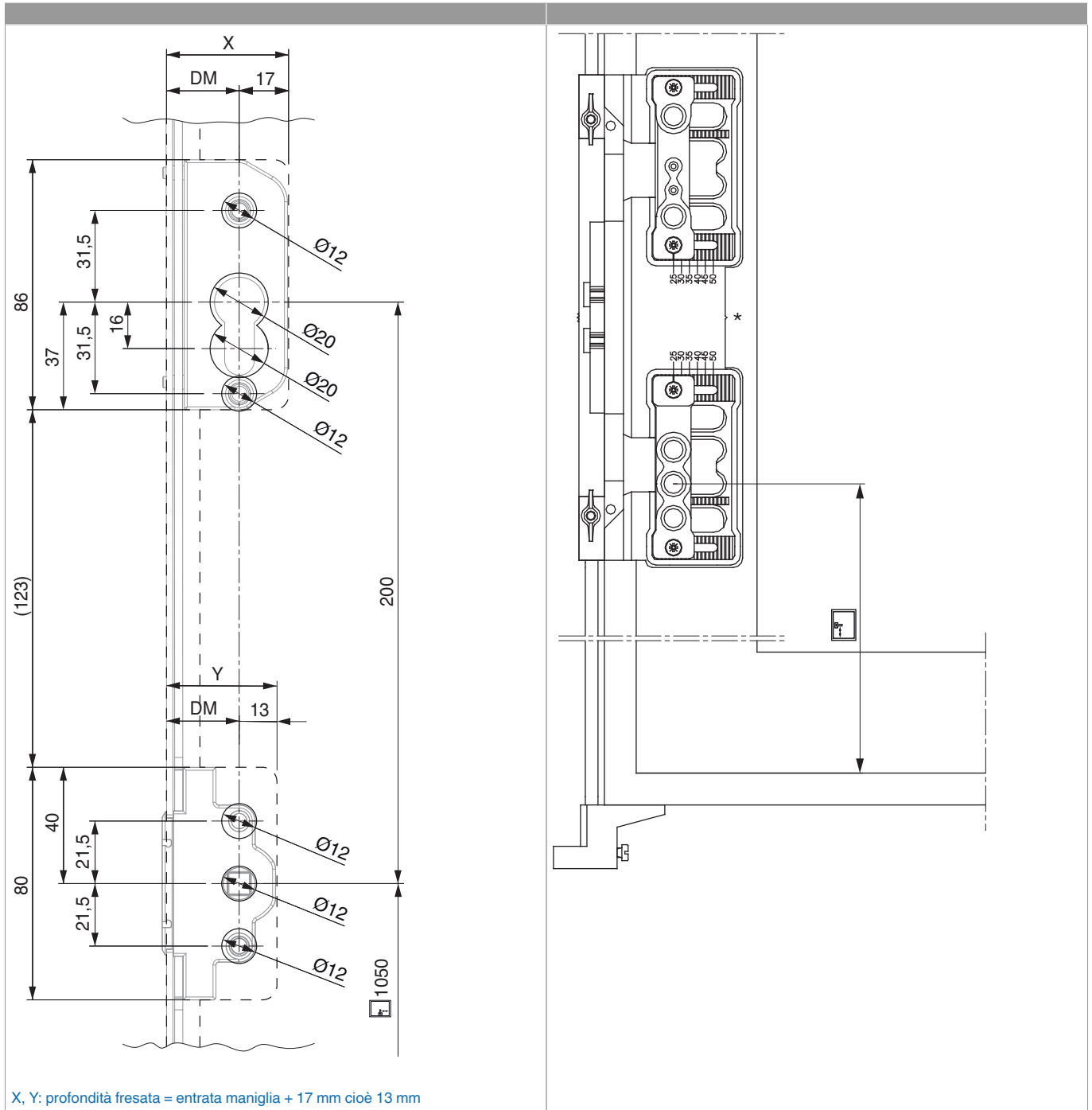




Collegamento scarpetta dentata



Cremonese con serratura - preparazione della finestra



Regolazione pressione

Fungo e nottolino

