

Descrizione Description	Articolo Product code	Finiture Finishes				Misure mm Measures mm										Packaging			Note	
		IZ	IT	BO	BP	A	A2	B	C	Ø								U.M.		Pack
Modello / Model Testa cilindrica taglio croce Cross recessed pan head chipboard screw	Ø 3x20	FVB T3020 CC	●	●			20		5,9		3							pcs	500	0,5
	Ø 4x25	FVB T4025 CC	●	●			25		7,9		4							pcs	500	0,9
	Ø 4x35	FVB T4035 CC	●	●			35		7,9		4							pcs	500	1,2
Modello / Model Testa piana svasata taglio croce Cross recessed countersunk head chipboard screw	Ø 3,5x30	FVB T3530 SC	●	●			30		7		3,5							pcs	500	0,7
	Ø 4,5x35	FVB T4535 SC	●	●			35		9		4,5							pcs	500	1,3
Modello / Model Testa mezza tonda taglio Torx Torx recessed half round head chipboard screw	Ø 5,5x25	FVB T5525 MX	●	●			25		12		5,5							pcs	500	2,1
	Ø 5,5x30	FVB T5530 MX	●	●			30		12		5,5							pcs	500	2,2
	Ø 5,5x35	FVB T5535 MX	●	●			35		12		5,5							pcs	500	2,4
	Ø 5,5x45	FVB T5545 MX	●	●			45		13		5,5							pcs	500	2,8
Modello / Model Autofilettante testa cilindrica DIN 7981 Self tapping cylinder head DIN 7981	Ø 3,9x25	FVB A3925 CC	●	●			25		7,5		3,9							pcs	100	0,2
	Ø 3,9x32	FVB A3932 CC	●	●			32		7,5		3,9							pcs	100	0,2
	Ø 5,5x25	FVB A5525 CC	●	●			25		11		5,5							pcs	100	0,4
	Ø 5,5x32	FVB A5532 CC	●	●			32		11		5,5							pcs	100	0,6
	Ø 5,5x38	FVB A5538 CC	●	●			38		11		5,5							pcs	100	0,7
Modello / Model Autofilettante testa piana svasata DIN 7982 Self tapping cylinder sunk rear DIN 7982	Ø 3,9x13	FVB A3913 SC	●	●			13		7,5		3,9							pcs	100	0,2
	Ø 3,9x32	FVB A3932 SC	●	●			32		7,5		3,9							pcs	100	0,2
Modello / Model Testa tonda quadro sotto testa DIN 603 con borchia Cup head square neck bolts with large head DIN 603 and stud	M 5x30	FVB B5030 Q0	●	●			30		13		5							pcs	200	1,8
	M 5x35	FVB B5035 Q0	●	●			35		13		5							pcs	200	1,9
	M 5x40	FVB B5040 Q0	●	●			40		13		5							pcs	200	2
	M 5x45	FVB B5045 Q0	●	●			45		13		5							pcs	200	2,2
	M 5x50	FVB B5050 Q0	●	●			50		13		5							pcs	200	2,3
	M 5x55	FVB B5055 Q0	●	●			55		13		5							pcs	200	2,4
Modello / Model Borchia Stud	M 5	FVB 0150B 00			●	●	10		13		6							pcs	200	0,6
Modello / Model Rondella per fissaggio viti Rubber washer for fitting screws	M 5	LRN P0510 10	●				10			1	7							pcs	1000	

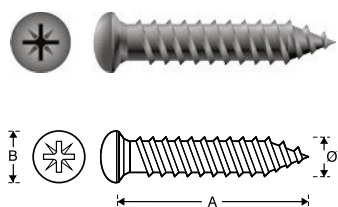
IZ ferro zincato nero
black zinc iron

IT ferro tropicalizzato
yellow zinc iron

BO ottone naturale
natural brass

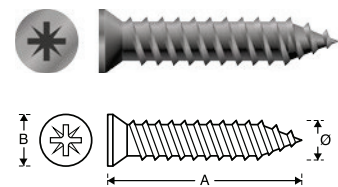
BP ottone con verniciatura poliestere nero
brass with black powder coating

G1 EPDM 70 SH; tolleranza ISO 3302 classe E2; qualita' secondo ISO 2859 AQL 1,5
EPDM 70 SH; ISO tolerance class E2 3302; quality 'according to ISO 2859 AQL 1.5.



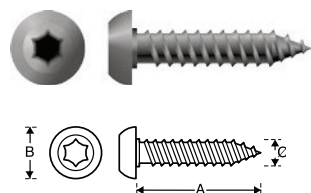
Modello / Model
**Testa cilindrica
taglio croce**
*Cross recessed
pan head
chipboard screw*

Dimensioni /
Dimensions available
Ø 3 × 20
Ø 4 × 25
Ø 4 × 35



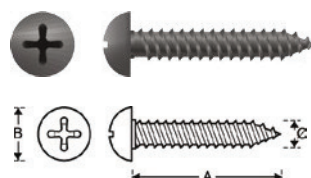
Modello / Model
**Testa piana svasata
taglio croce**
*Cross recessed
countersunk head
chipboard screw*

Dimensioni /
Dimensions available
Ø 3,5 × 30
Ø 4,5 × 35



Modello / Model
**Testa mezza tonda
taglio Torx**
*Torx recessed
half round head
chipboard screw*

Dimensioni /
Dimensions available
Ø 5,5 × 25
Ø 5,5 × 30
Ø 5,5 × 35
Ø 5,5 × 45

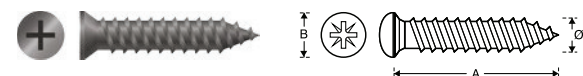


Modello / Model
**Autofilettante testa
cilindrica DIN 7981**
*Self tapping cylinder
head DIN 7981*

Dimensioni /
Dimensions available
Ø 3,9 × 25
Ø 3,9 × 32
Ø 5,5 × 25
Ø 5,5 × 32
Ø 5,5 × 38



IDONEA PER PROFILI IN ALLUMINIO
SUITABLE FOR ALLUMINIUM PROFILES

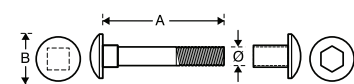


Modello / Model
**Autofilettante testa
piana svasata DIN 7982**
*Self tapping cylinder
sunk rear DIN 7982*

Dimensioni /
Dimensions available
Ø 3,9 × 13
Ø 3,9 × 32

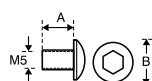


IDONEA PER PROFILI IN ALLUMINIO PER APPLICAZIONE CON
BANDELLE
AD INCASSO

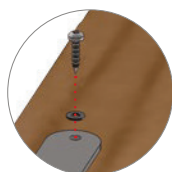
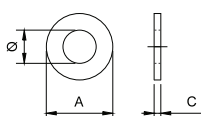


Modello / Model
**Testa tonda
quadro sotto testa
DIN 603
con borchia**
*Cup head
square neck bolts
with large head DIN 603
and stud*

Dimensioni /
Dimensions available
M5 × 30
M5 × 35
M5 × 40
M5 × 45
M5 × 50
M5 × 55



Modello / Model
Borchia
Stud



Modello / Model
Rondella per fissaggio viti
Rubber washer for fitting